

MONTHLY MEMBERSHIP PROGRESS REPORT

LOCATION REP OF BANGLADESH

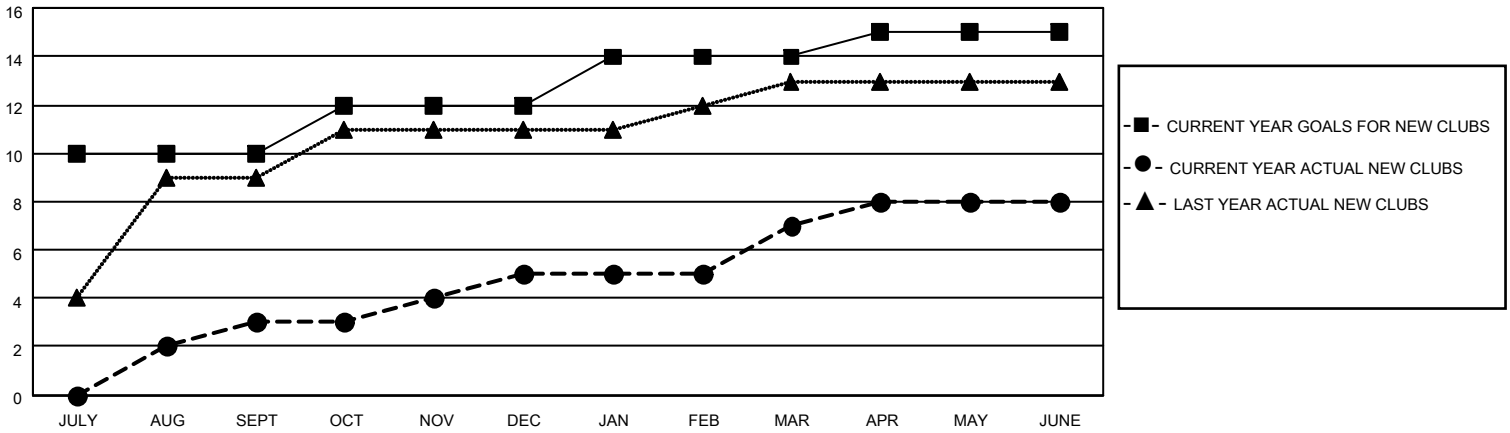
District 315B1

Results as of: 6/30/2023

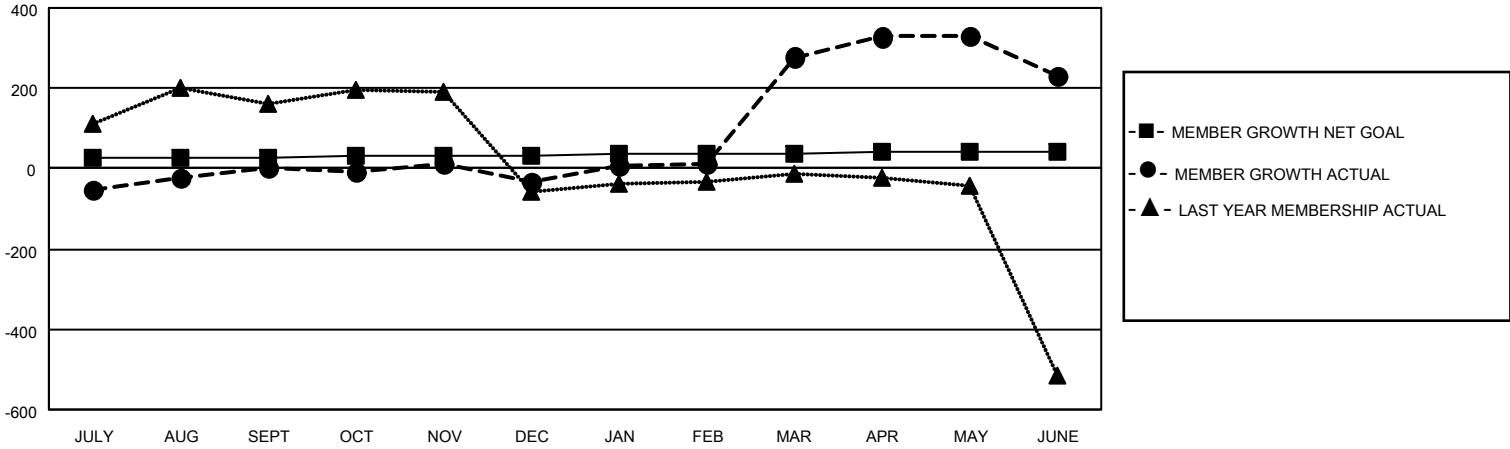
Clubs			
RESULTS FOR 2022-2023			
QUARTER	NEW CLUB GOAL	NEW CLUBS	DROPPED CLUBS
JULY/AUG/SEPT	10	3	0
OCT/NOV/DEC	2	2	3
JAN/FEB/MAR	2	2	0
APR/MAY/JUNE	1	1	1

Members			
RESULTS FOR 2022-2023			
QUARTER	MEMBER GROWTH NET GOAL	MEMBER GROWTH ACTUAL	DROPPED MEMBERS ACTUAL (including transfers)
JULY/AUG/SEPT	25	150	127
OCT/NOV/DEC	5	82	113
JAN/FEB/MAR	5	382	53
APR/MAY/JUNE	5	87	128

GOALS AND ACTUAL NEW CLUBS CUMULATIVE



GOALS AND ACTUAL MEMBERS CUMULATIVE



DROPPED CLUBS: 4

91 CLUBS OF 136 ADDED 1 OR MORE NEW MEMBERS

GENDER DISTRIBUTION

MALE	2,504 (83.24%)
FEMALE	504 (16.76%)
NON BINARY	0 (0.00%)
PREFER NOT TO ANSWER	0 (0.00%)

DROPPED MEMBERS

[CLICK HERE FOR CUMULATIVE MEMBERSHIP DATA](#)

DECEASED	5
CLUB CANCELLED	84
OTHER	333
TOTAL	422

TOTAL FAMILY UNIT MEMBERS 720

FAMILY MEMBERS PAYING HALF DUES 507